

**Hampshire Health and Adult Social Care Select Committee
18th January 2022**

**Frimley Health NHS Foundation Trust
Covid-19 Update**

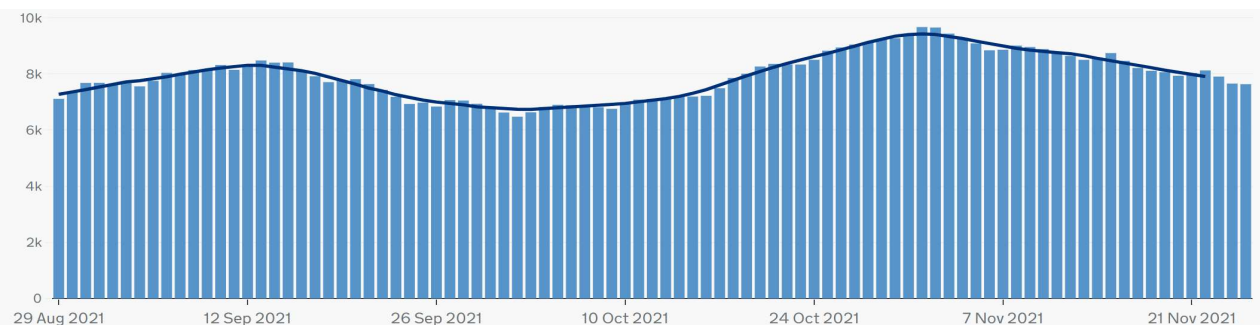
**Lorna Wilkinson
Chief of Nursing and Midwifery**

COVID 19 Impact

Omicron variant

- Covid-19 positive inpatients in the Trust have increased – and we are planning for a peak in mid January
- Community prevalence of Covid-19 has continued to increase across all locations in the Trust footprint.
- FHFT staff continue to wear appropriate PPE, in line with national guidance and in the context of increased transmissibility of Omicron risk assessments have been reviewed and staff are wearing FFP3 level masks in key areas.
- Visiting has unfortunately been restricted again to exceptional circumstances only (outside of paediatrics and maternity) due to increased community prevalence and associated outbreaks in wards
- Twice weekly lateral flow testing for patient facing staff continues
- Covid-19 vaccination uptake by FHFT 95% for first dose and 93% second dose

No. of patients in UK hospitals with Covid-19



Operational challenge



Unprecedented pressures in urgent and emergency care but FHFT is performing better than most trusts.

Some ops cancelled and escalation areas opened, but we're working with community and social care to improve discharges and find alternatives to hospital admission.

Covid remains a major threat. Extensive planning underway for anticipated peak in January 2022



Know where to go when feeling unwell

Emergency department or call 999 only for very serious life threatening situations.

This can include:

- Loss of consciousness
- An acute confused state
- Fits that are not stopping
- Chest pain
- Breathing difficulties
- Severe bleeding that cannot be stopped
- Severe allergic reactions
- Severe burns or scalds

Call 999 immediately if you or someone else is having a heart attack or stroke.
Also call 999 if you think someone has had a major trauma, such as after a serious road traffic accident, a stabbing, shooting, a fall from height, or serious head injury.
If you are unsure, call NHS 111 or go on-line at 111.nhs.uk

999

Emergency
department



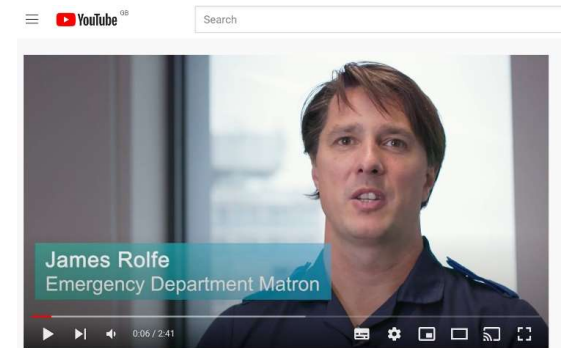
Operational delivery



Hospital @ Home service

Actions to support operational challenges include:

- Improving flow and capacity in ED, including staffing
- Providing more alternatives to hospital care
- Extend community support
- Virtual outpatient appointments – funding bid to expand further
- Patient initiated follow-ups to avoid unnecessary visits
- Public messaging campaigns to educate and prepare patients



Videos to support patients accessing FHFT services

Current Status

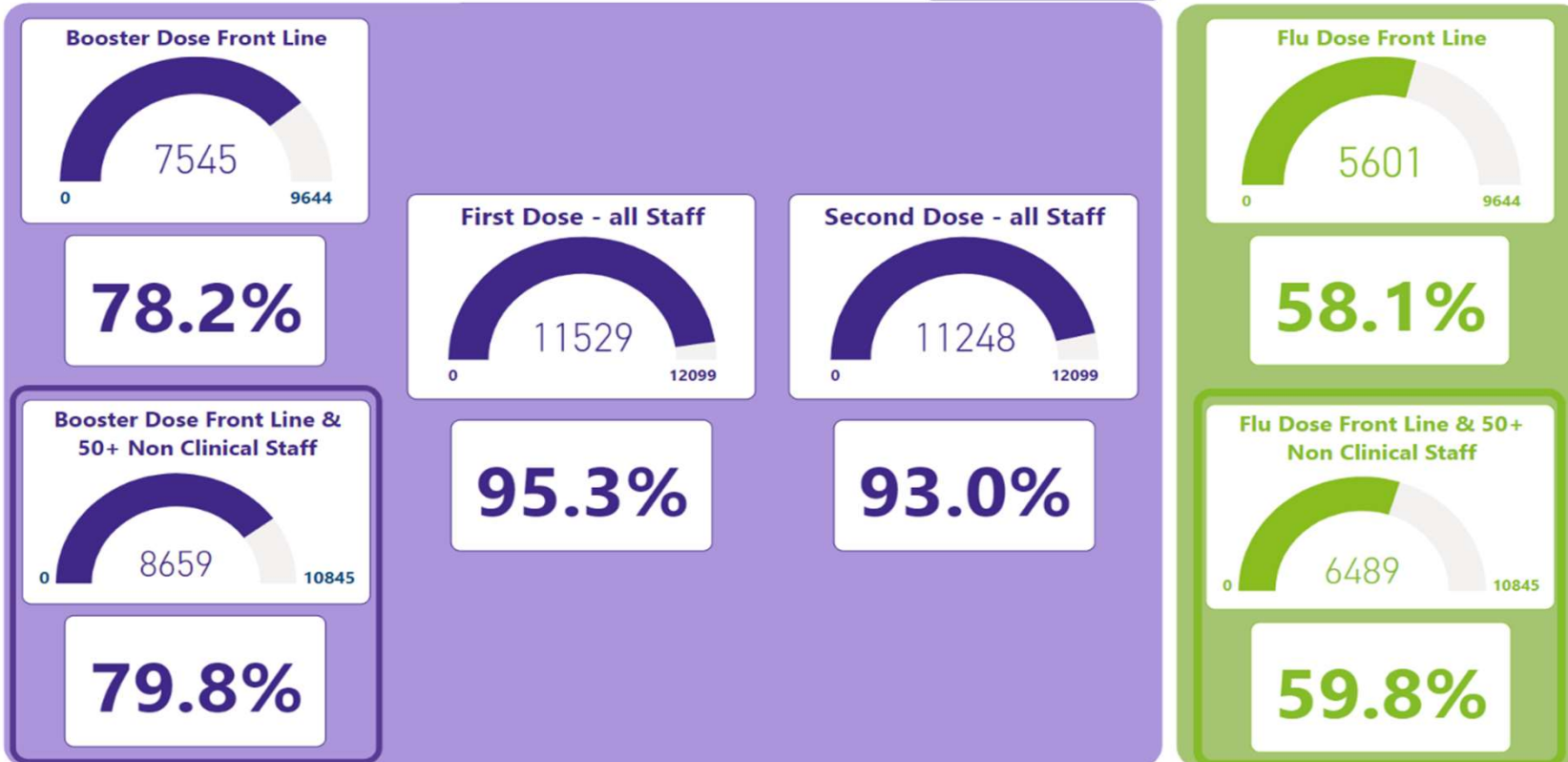
Headline

Data as of **04/01/2022 07:30**

COVID Vaccination Status

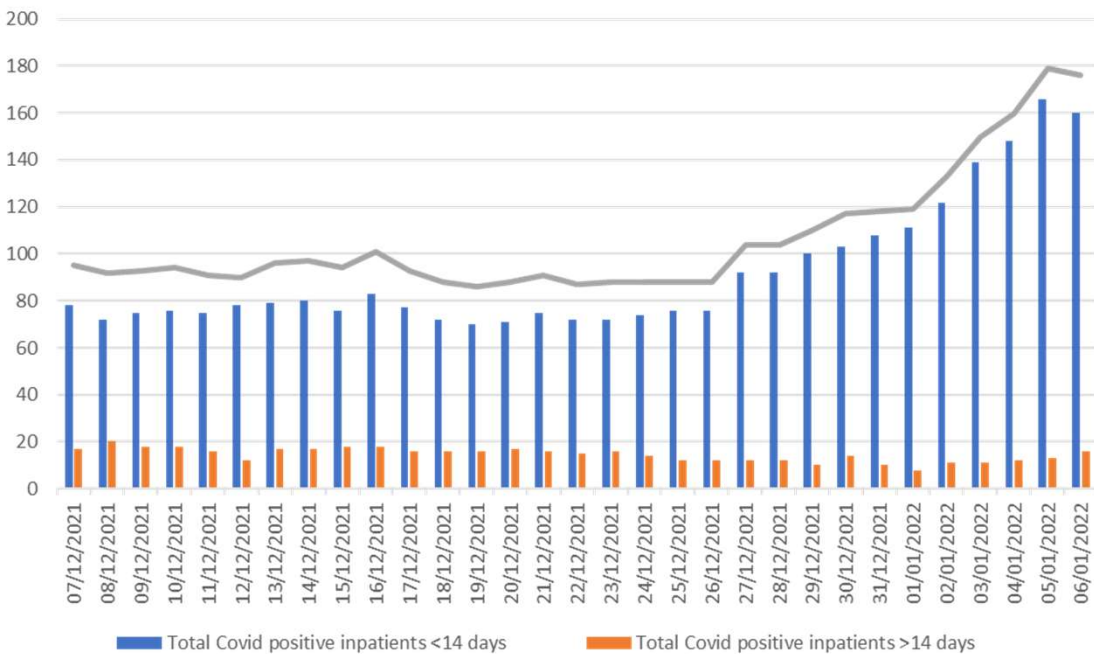
Data as of: 03 January 2022

Flu Vaccination Status

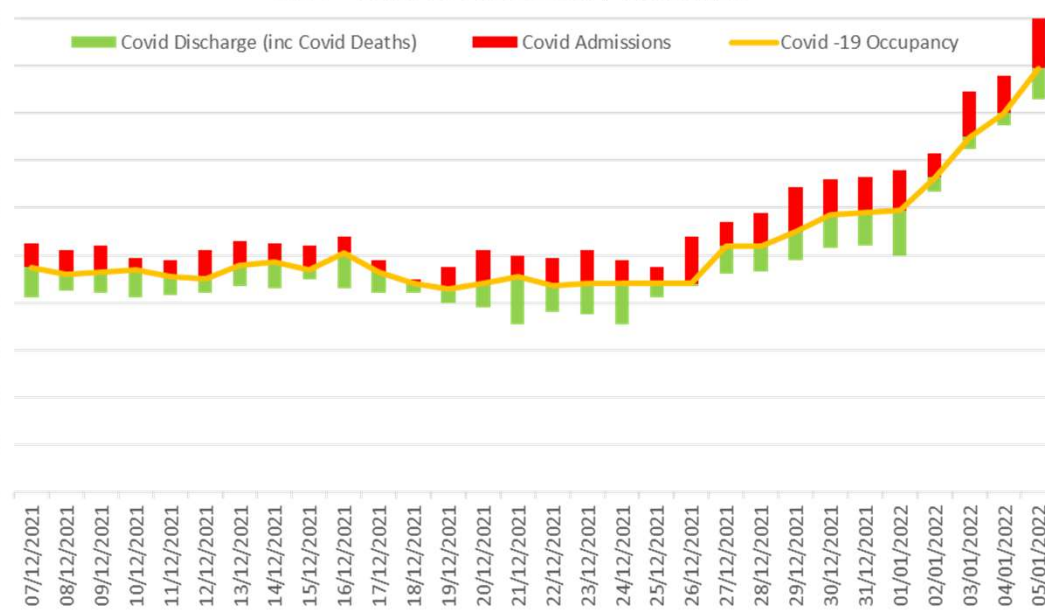


The following slides provide the most recent Covid Operational Update as at Tuesday 4th January 2022

FHFT Covid - 19 Inpatients

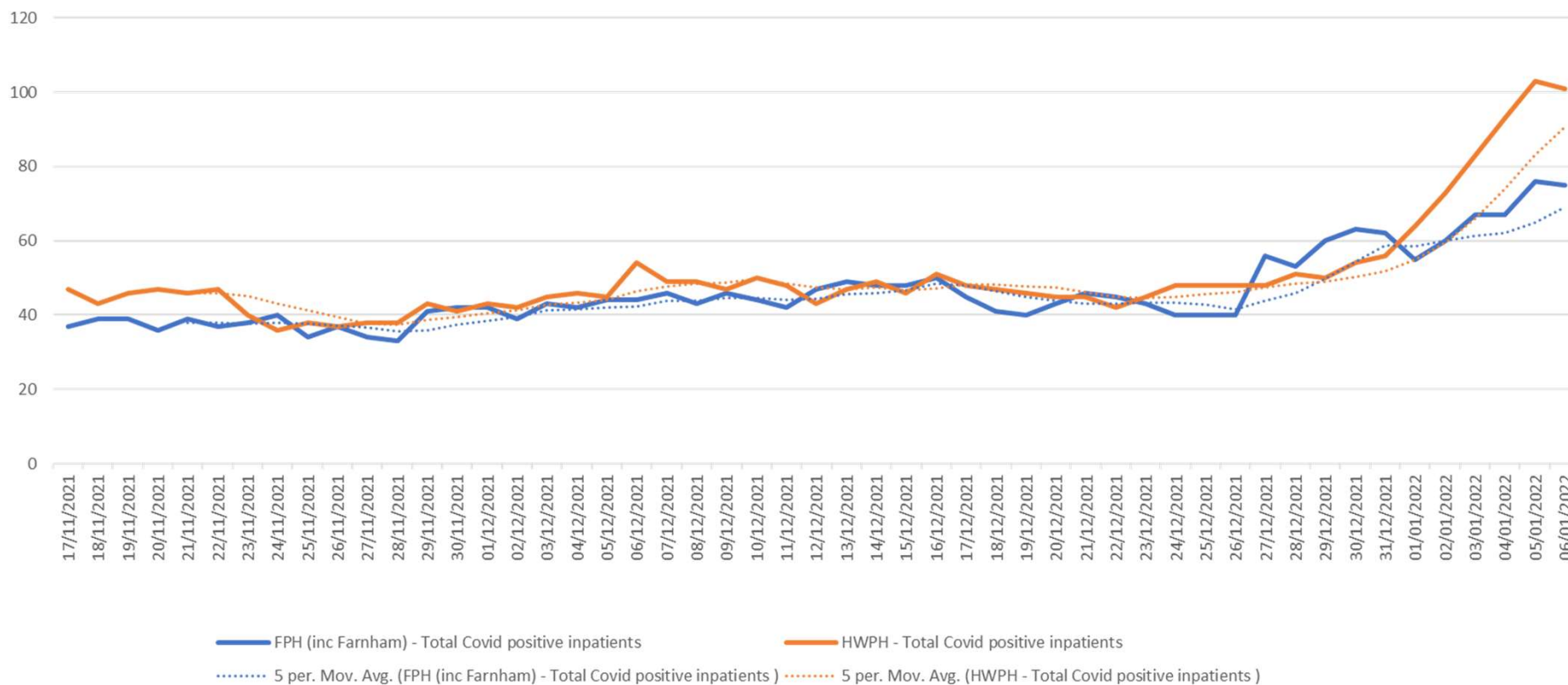


FHFT - Covid-19 Admissions / Discharges

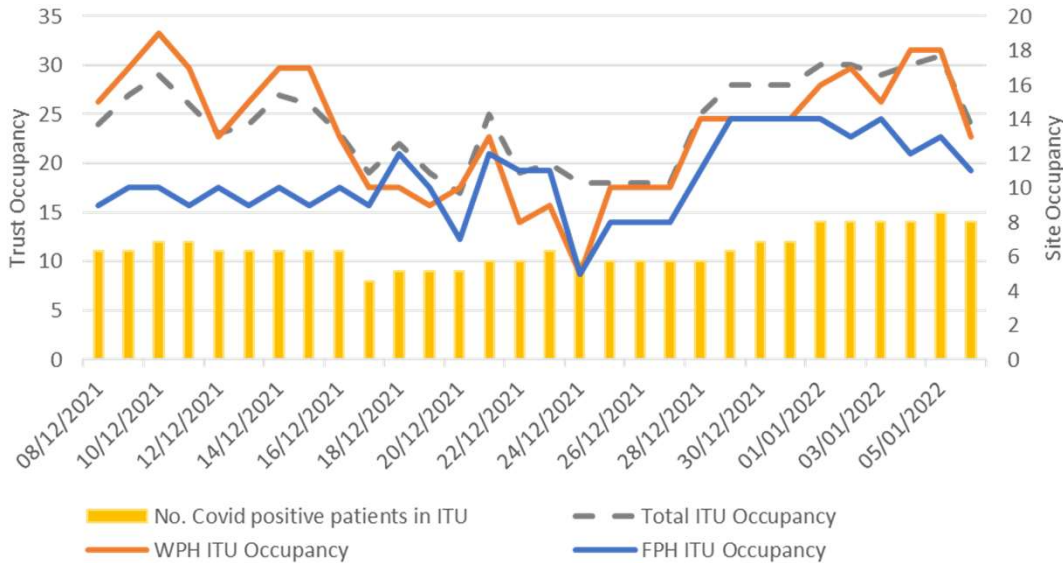


Date	Total Covid positive inpatients <14 days	Total Covid positive inpatients >14 days	Total Covid positive inpatients
06/01/2022	160	16	176

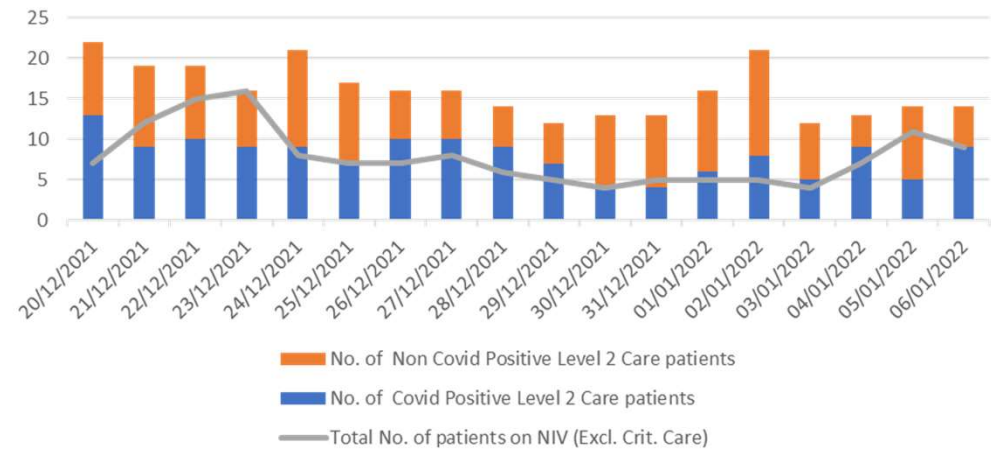
FHFT - Covid Inpatients



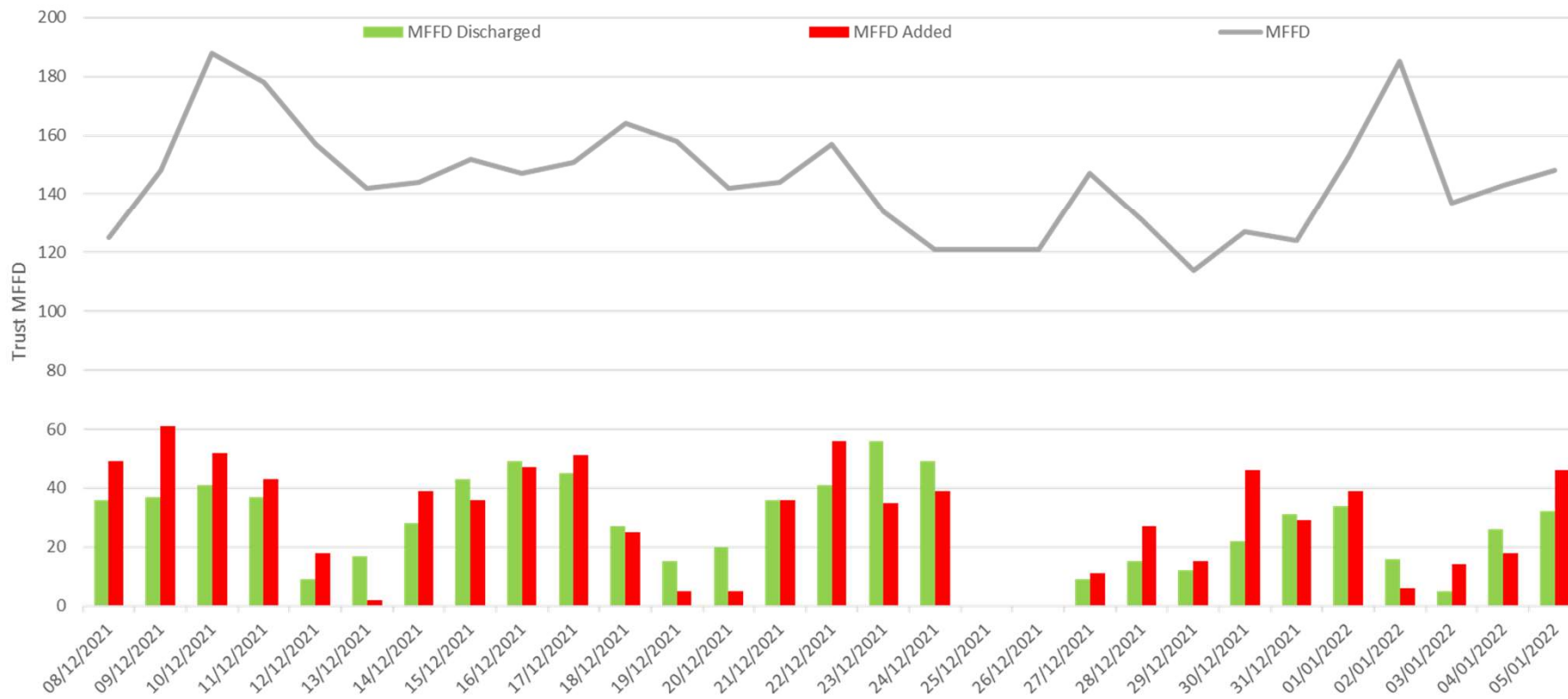
FHFT - Critical Care Occupancy



FHFT - Level 2 Occupancy

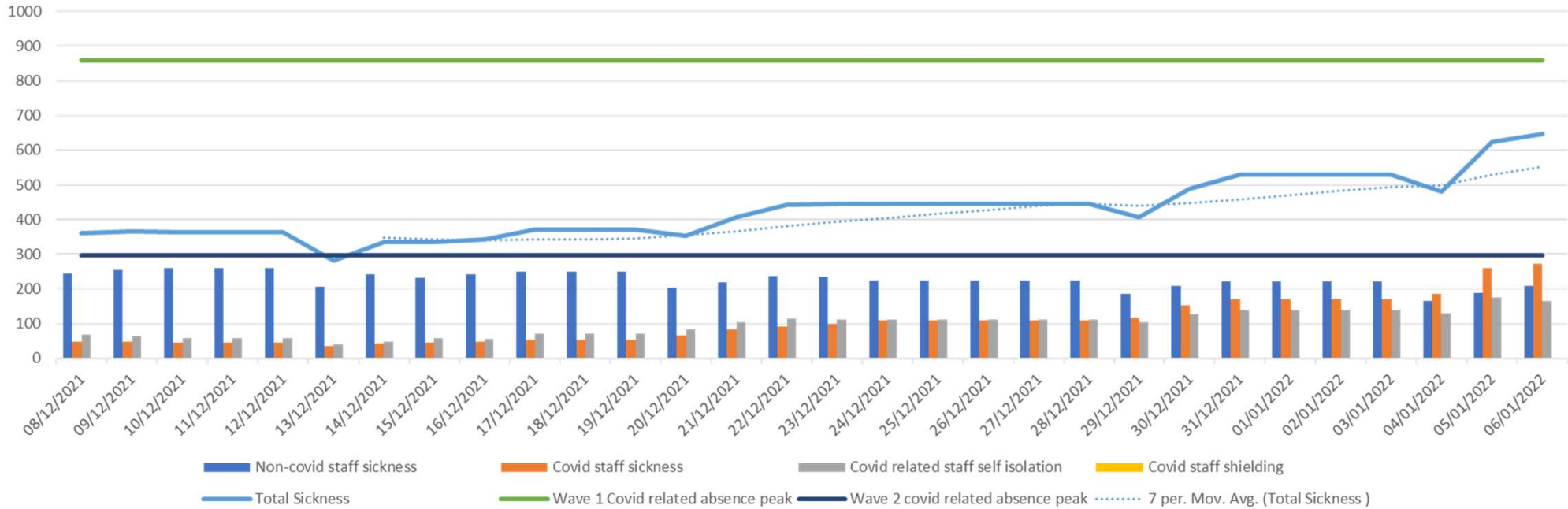


FHFT - MFFD



	FHFT Total MFFD	MFFD Added Yesterday	MFFD Discharged Yesterday
05/01/2022	148	46	32

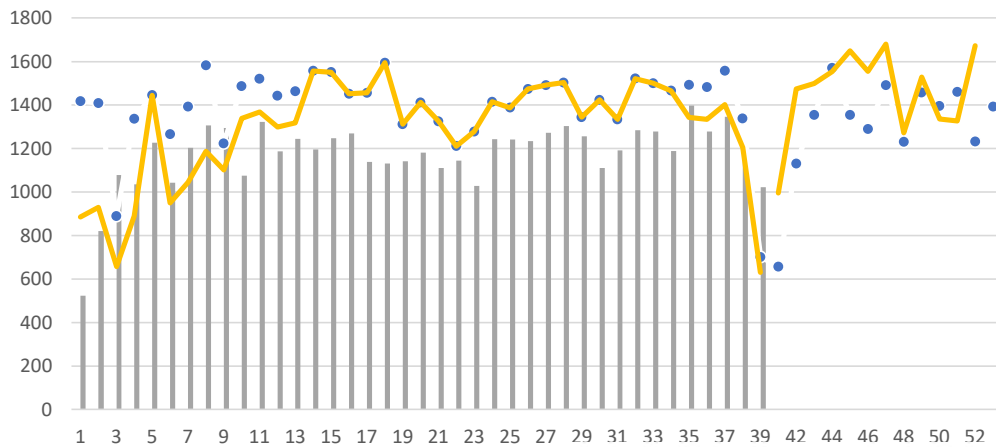
FHFT Staff Sickness



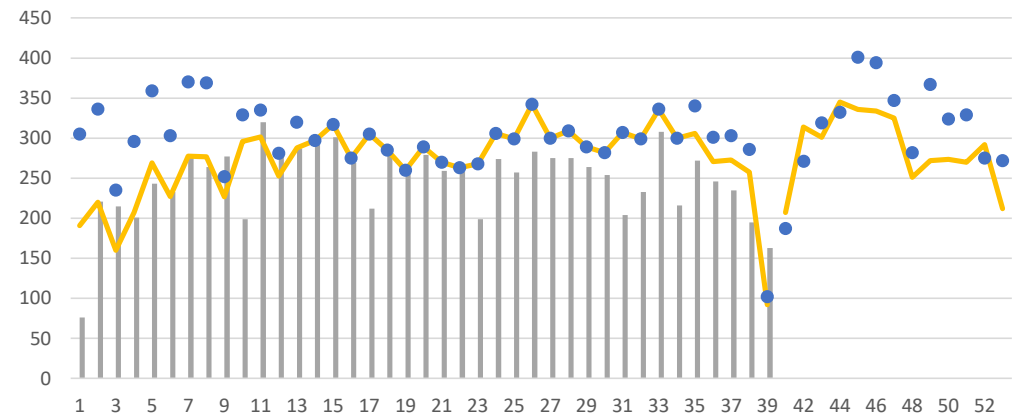
	Non-covid staff sickness	Covid staff sickness	Covid related staff self isolation	Covid staff shielding	Total Sickness
06/01/2022	210	272	165	0	647

Elective Care

Week on Week DC Performance against 2021 Plan



Week on Week Performance EL against 2021 Plan



Week on Week OPD Performance against 2021 Plan

